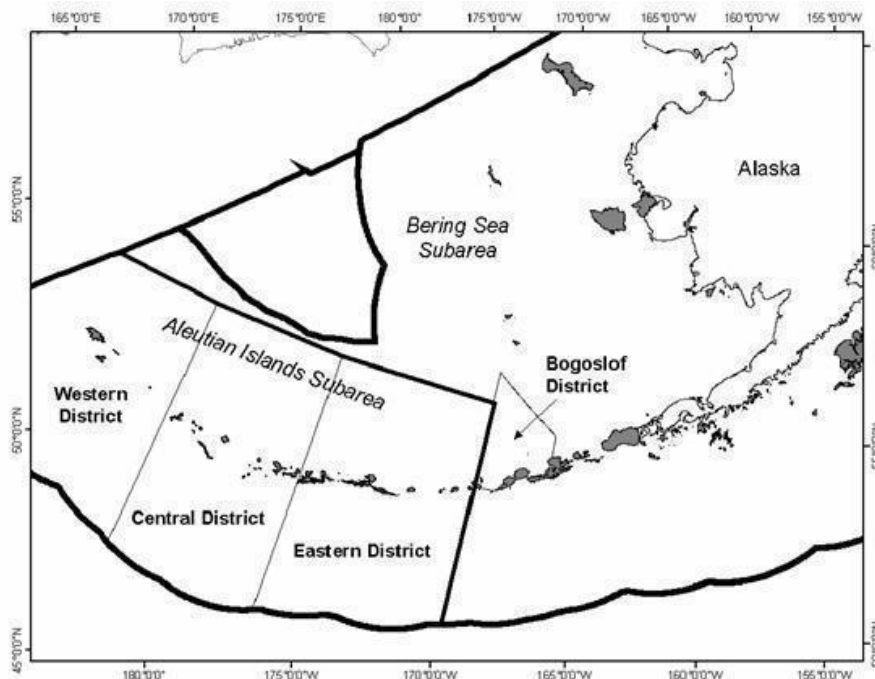


CATCH REPORTS

FOR THE GROUND FISH RESOURCES

OF THE BERING SEA/ALEUTIAN ISLANDS REGIONS



November 2025

**North Pacific Fishery Management Council
1007 West Third, Suite 400
Anchorage, AK 99501**

For the Bering Sea Aleutian Islands, 7 stocks were scheduled to have had full or updated assessments in 2025 (EBS Pollock, EBS Pacific cod, AI Pacific cod, BSAI Yellowfin sole, BSAI Greenland turbot, BSAI Northern rockfish and BSAI Skates), the remaining 15 stocks were scheduled for catch reports in this cycle.

Due to the lapse in Federal appropriations from October 1 - November 12, 2025, Federal stock assessment authors did not have the time to complete new groundfish assessments as planned, and as a result, the Council's Groundfish Plan Teams did not convene to review stock assessments and provide their recommendations on harvest specifications. At the December 2025 meeting, the SSC, AP, and Council will review these catch reports and other information compiled by staff to support 2026-2027 final groundfish harvest specifications and make recommendations on groundfish harvest specifications.

1. Assessment of Pollock in the Bering Sea and Aleutian Islands

Alaska Fisheries Science Center, National Marine Fisheries Service

Catch report

The most recent full assessments of [EBS pollock](#), [AI pollock](#) and [Bogoslof pollock](#) were all in 2024. Catch data are current through November 8, 2025. No assessment was conducted for this stock this year due to the lapse in Congressional appropriations and resulting government shutdown. Until data are updated, the values generated from the previous stock assessment will be rolled over for specifications.

Area	Year	OFL	ABC	TAC	Catch
EBS	2024	3,162,000	2,313,000	1,313,580	1,311,261
AI	2024	51,516	42,654	5,420	4,999
Bogoslof	2024	115,146	86,360	250	23
EBS	2025	2,957,000	2,417,000	1,389,000	1,324,556
AI	2025	55,728	46,051	5,000	4,527
Bogoslof	2025	77,354	58,015	250	63
EBS	2026	2,496,000	2,036,000		
AI	2026	56,231	46,437		
Bogoslof	2026	77,354	58,015		
EBS	2027	2,496,000	2,036,000		
AI	2027	56,231	46,437		
Bogoslof	2027	77,354	58,015		

2. Assessment of Pacific cod in the Bering Sea and Aleutian Islands

Alaska Fisheries Science Center, National Marine Fisheries Service

Catch report

The most recent [full assessment](#) of this stock was in 2024. Catch data are current through November 8, 2025. No assessment was conducted for this stock this year due to the lapse in Congressional appropriations and resulting government shutdown. Until data are updated, the values generated from the previous stock assessment will be rolled over for specifications.

Area	Year	OFL	ABC	TAC	Catch
BS	2024	200,995	167,952	147,753	142,783
AI	2024	18,416	12,431	8,080	4,169
BS	2025	183,509	153,617	133,602	111,227
AI	2025	16,782	13,376	8,694	4,608
BS	2026	169,243	141,520		
BS	2027	169,243	141,520		
AI	2026	16,273	12,973		
AI	2027	16,273	12,973		

3. Assessment of Sablefish in the Bering Sea and Aleutian Islands

Alaska Fisheries Science Center, National Marine Fisheries Service

Catch report

The most recent [full assessment](#) of this stock was in 2024. Catch data are current through November 8, 2025. No assessment was conducted for this stock this year due to the lapse in Congressional appropriations and resulting government shutdown. Until data are updated, the values generated from the previous stock assessment will be rolled over for specifications.

Area	Year	OFL	ABC	TAC	Catch
Alaska (all areas)	2024	55,084	47,146		
	2025	58,532	47,605		
	2026	57,797	47,008		
	2027	57,797	47,008		
Bering Sea	2024		11,450	7,996	4,591
	2025		13,203	8,496	3,751
	2026		13,037		
	2027		13,037		
Aleutian Islands	2024		13,100	8,440	1,742
	2025		11,566	7,940	921
	2026		11,421		
	2027		11,421		

4. Assessment of Yellowfin Sole in the Bering Sea and Aleutian Islands

Alaska Fisheries Science Center, National Marine Fisheries Service

Catch report

The most recent [full assessment](#) of this stock was in 2024. Catch data are current through November 8, 2025. No assessment was conducted for this stock this year due to the lapse in Congressional appropriations and resulting government shutdown. Until data are updated, the values generated from the previous stock assessment will be rolled over for specifications.

Area	Year	OFL	ABC	TAC	Catch
BSAI	2024	305,298	265,913	195,000	91,192
	2025	299,247	262,557	135,000	80,971
	2026	305,039	267,639		
	2027	305,039	267,639		

5. Assessment of Greenland Turbot in the Bering Sea and Aleutian Islands

Alaska Fisheries Science Center, National Marine Fisheries Service

Catch report

The most recent [full assessment](#) of this stock was in 2024. Catch data are current through November 8, 2025. No assessment was conducted for this stock this year due to the lapse in Congressional appropriations and resulting government shutdown. Until data are updated, the values generated from the previous stock assessment will be rolled over for specifications.

Area	Year	OFL	ABC	TAC	Catch
BSAI	2024	3,705	3,188	3,188	768
EBS	2024		2,687	2,687	463
AI	2024		501	501	305
BSAI	2025	2,598	1,678	1,678	618
EBS	2025		1,415	1,415	406
AI	2025		263	263	212
BSAI	2026	2,059	1,328		
EBS	2026		1,120		
AI	2026		208		
BSAI	2027	2,059	1,328		
EBS	2027		1,120		
AI	2027		208		

6. Assessment of Arrowtooth Flounder in the Bering Sea and Aleutian Islands

Alaska Fisheries Science Center, National Marine Fisheries Service

Catch report

The most recent [full assessment](#) of this stock was in 2023. Catch data are current through November 8, 2025. No assessment was conducted for this stock this year due to the lapse in Congressional appropriations and resulting government shutdown. Until data are updated, the values generated from the previous stock assessment will be rolled over for specifications.

Area	Year	OFL	ABC	TAC	Catch
BSAI	2024	103,280	87,690	14,000	10,660
	2025	104,428	88,683	14,000	9,024
	2026	102,472	87,035		
	2027	102,472	87,035		

7. Assessment of Kamchatka flounder in the Bering Sea and Aleutian Islands

Alaska Fisheries Science Center, National Marine Fisheries Service

Catch report

The most recent [full assessment](#) of this stock was in 2024. Catch data are current through November 8, 2025. No assessment was conducted for this stock this year due to the lapse in Congressional appropriations and resulting government shutdown. Until data are updated, the values generated from the previous stock assessment will be rolled over for specifications.

Area	Year	OFL	ABC	TAC	Catch
BSAI	2024	8,850	7,498	7,498	5,157
	2025	8,019	6,800	6,800	5,038
	2026	7,790	6,606		
	2027	7,790	6,606		

8. Assessment of Northern rock sole in the Bering Sea and Aleutian Islands

Alaska Fisheries Science Center, National Marine Fisheries Service

Catch report

The most recent [full assessment](#) of this stock was in 2024. Catch data are current through November 8, 2025. No assessment was conducted for this stock this year due to the lapse in Congressional appropriations and resulting government shutdown. Until data are updated, the values generated from the previous stock assessment will be rolled over for specifications.

Area	Year	OFL	ABC	TAC	Catch
BSAI	2024	197,828	122,091	66,000	29,855
	2025	165,444	157,487	67,000	39,947
	2026	166,220	158,225		
	2027	166,220	158,225		

9. Assessment of Flathead sole in the Bering Sea and Aleutian Islands

Alaska Fisheries Science Center, National Marine Fisheries Service

Catch report

The most recent [full assessment](#) of this stock was in 2024. Catch data are current through November 8, 2025. No assessment was conducted for this stock this year due to the lapse in Congressional appropriations and resulting government shutdown. Until data are updated, the values generated from the previous stock assessment will be rolled over for specifications.

Area	Year	OFL	ABC	TAC	Catch
BSAI	2024	81,605	67,289	35,500	13,176
	2025	101,621	83,807	36,000	8,432
	2026	106,283	87,700		
	2027	106,283	87,700		

10. Assessment of Alaska plaice in the Bering Sea and Aleutian Islands

Alaska Fisheries Science Center, National Marine Fisheries Service

Catch report

The most recent [full assessment](#) of this stock was in 2024. Catch data are current through November 8, 2025. No assessment was conducted for this stock this year due to the lapse in Congressional appropriations and resulting government shutdown. Until data are updated, the values generated from the previous stock assessment will be rolled over for specifications.

Area	Year	OFL	ABC	TAC	Catch
BSAI	2024	42,695	35,494	21,752	10,399
	2025	34,576	28,745	15,903	6,947
	2026	33,965	28,230		
	2027	33,965	28,230		

11. Assessment of Other Flatfish in the Bering Sea and Aleutian Islands

Alaska Fisheries Science Center, National Marine Fisheries Service

Catch report

The most recent [full assessment](#) of this stock was in 2024. Catch data are current through November 8, 2025. In accordance with the approved schedule, no assessment was conducted for this stock this year, however a full stock assessment will be conducted in 2028. Until then, the values generated from the previous stock assessment will be rolled over for 2026 specifications.

Area	Year	OFL	ABC	TAC	Catch
BSAI	2024	22,919	17,189	4,500	3,197
	2025	26,083	19,562	5,225 ¹	5,353
	2026	26,083	19,562		
	2027	26,083	19,562		

¹ On June 27 the TAC for "other flatfish" was raised from 4,500 mt to 5,225 mt through a release of non-specified reserves. For more information see: <https://www.fisheries.noaa.gov/bulletin/ib-25-24-apportionment-groundfish-reserve-bering-sea-and-aleutian-islands-management>

12. Assessment of Pacific ocean perch in the Bering Sea and Aleutian Islands

Alaska Fisheries Science Center, National Marine Fisheries Service

Catch report

The most recent [full assessment](#) of this stock was in 2024. Catch data are current through November 8, 2025. No assessment was conducted for this stock this year due to the lapse in Congressional appropriations and resulting government shutdown. Until data are updated, the values generated from the previous stock assessment will be rolled over for specifications.

Area	Year	OFL	ABC	TAC	Catch
BSAI	2024	49,010	41,096	37,626	37,096
	2025	44,594	37,375	33,458	31,652
	2026	43,084	36,578		
	2027	43,084	36,578		
EBS	2024		11,636	11,636	11,746
	2025		10,121	10,121	9,483
	2026		9,905		
	2027		9,905		
EAI	2024		7,969	7,969	7,792
	2025		6,278	6,278	6,003
	2026		6,144		
	2027		6,144		
CAI	2024		5,521	5,521	5,250
	2025		5,559	5,559	4,803
	2026		5,441		
	2027		5,441		
WAI	2024		15,970	12,500	12,308
	2025		15,417	11,500	11,363
	2026		16,058		
	2027		16,058		

13. Assessment of Northern rockfish in the Bering Sea and Aleutian Islands

Alaska Fisheries Science Center, National Marine Fisheries Service

Catch report

The most recent [full assessment](#) of this stock was in 2023. Catch data are current through November 8, 2025. No assessment was conducted for this stock this year due to the lapse in Congressional appropriations and resulting government shutdown. Until data are updated, the values generated from the previous stock assessment will be rolled over for specifications.

Area	Year	OFL	ABC	TAC	Catch
BSAI	2024	23,556	19,274	16,752	8,809
	2025	22,848	18,694	12,000	8,014
	2026	22,284	18,232		
	2027	22,284	18,232		

14. Assessment of Blackspotted and rougheye rockfish in the Bering Sea and Aleutian Islands

Alaska Fisheries Science Center, National Marine Fisheries Service

Catch report

The most recent [full assessment](#) of this stock was in 2024. Catch data are current through November 8, 2025. No assessment was conducted for this stock this year due to the lapse in Congressional appropriations and resulting government shutdown. Until data are updated, the values generated from the previous stock assessment will be rolled over for specifications.

Area	Year	OFL	ABC	TAC	Catch
BSAI	2024	761	569	569	639
	2025	838	706	706	642
	2026	902	766		
	2027	902	766		
WCAI	2024		181	181	439
	2025		298	298	418
	2026		325		
	2027		325		
EAI/EBS	2024		388	388	201
	2025		408	408	224
	2026		441		
	2027		441		

15. Assessment of Shortraker rockfish in the Bering Sea and Aleutian Islands

Alaska Fisheries Science Center, National Marine Fisheries Service

Catch report

The most recent [full assessment](#) of this stock was in 2024. Catch data are current through November 8, 2025. In accordance with the approved schedule, no assessment was conducted for this stock this year, however a full stock assessment will be conducted in 2026. Until then, the values generated from the previous stock assessment will be rolled over for 2026 specifications.

Area	Year	OFL	ABC	TAC	Catch
BSAI	2024	706	530	530	177
	2025	631	473	473	301
	2026	631	473		
	2027	631	473		

16. Assessment of Other rockfish in the Bering Sea and Aleutian Islands

Alaska Fisheries Science Center, National Marine Fisheries Service

Catch report

The most recent [full assessment](#) of this stock was in 2024. Catch data are current through November 8, 2025. In accordance with the approved schedule, no assessment was conducted for this stock this year, however a full stock assessment will be conducted in 2026. Until then, the values generated from the previous stock assessment will be rolled over for 2026 specifications.

Area	Year	OFL	ABC	TAC	Catch
BSAI	2024	1,680	1,260	1,260	1,361
	2025	1,406	1,054	1,054	1,026
	2026	1,406	1,054		
	2027	1,406	1,054		
EBS	2024		880	880	778
	2025		639	639	504
	2026		639		
	2027		639		
AI	2024		380	380	573
	2025		415	415	522
	2026		415		
	2027		415		

17. Assessment of Atka mackerel in the Bering Sea and Aleutian Islands

Alaska Fisheries Science Center, National Marine Fisheries Service

Catch report

The most recent [full assessment](#) of this stock was in 2024. Catch data are current through November 8, 2025. No assessment was conducted for this stock this year due to the lapse in Congressional appropriations and resulting government shutdown. Until data are updated, the values generated from the previous stock assessment will be rolled over for specifications.

Area	Year	OFL	ABC	TAC	Catch
BSAI	2024	111,684	95,358	72,987	72,173
	2025	122,622	103,247	82,000	80,440
	2026	107,889	92,361		
	2027	107,889	92,361		
EAI/EBS	2024		41,723	32,260	31,765
	2025		46,650	39,000	37,871
	2026		41,731		
	2027		41,731		
CAI	2024		16,754	16,754	16,616
	2025		26,511	24,443	24,121
	2026		23,716		
	2027		23,716		
WAI	2024		36,882	23,973	23,791
	2025		30,087	18,557	18,448
	2026		26,914		
	2027		26,914		

18. Assessment of Skates in the Bering Sea and Aleutian Islands

Alaska Fisheries Science Center, National Marine Fisheries Service

Catch report

The most recent [full assessment](#) of this stock was in 2023. Catch data are current through November 8, 2025. No assessment was conducted for this stock this year due to the lapse in Congressional appropriations and resulting government shutdown. Until data are updated, the values generated from the previous stock assessment will be rolled over for specifications.

Area	Year	OFL	ABC	TAC	Catch
BSAI	2024	45,574	37,808	30,519	27,146
	2025	44,086	36,523	27,646	19,503
	2026	43,285	35,833		
	2027	43,285	35,833		

19. Assessment of Sharks in the Bering Sea and Aleutian Islands

Alaska Fisheries Science Center, National Marine Fisheries Service

Catch report

The most recent [full assessment](#) of this stock was in 2022. Catch data are current through November 8, 2025. In accordance with the approved schedule, no assessment was conducted for this stock this year, however a full stock assessment will be conducted in 2026. Until then, the values generated from the previous stock assessment will be rolled over for 2026 specifications.

Area	Year	OFL	ABC	TAC	Catch
BSAI	2024	689	450	400	174
	2025	689	450	400	197
	2026	689	450		
	2027	689	450		

20. Assessment of Octopuses in the Bering Sea and Aleutian Islands

Alaska Fisheries Science Center, National Marine Fisheries Service

Catch report

The most recent [full assessment](#) of this stock was in 2023. Catch data are current through November 8, 2025. In accordance with the approved schedule, no assessment was conducted for this stock this year, however a full stock assessment will be conducted in 2027. Until then, the values generated from the previous stock assessment will be rolled over for 2026 specifications.

Area	Year	OFL	ABC	TAC	Catch
BSAI	2024	6,080	4,560	400	246
	2025	6,080	4,560	400	296
	2026	6,080	4,560		
	2027	6,080	4,560		