

BSAI Blackspotted Roughey rockfish Accountability Measures

Diana Stram, NPFMC


Advisory Panel October 2025

Overview of:

- BSAI Accountability Measures
- Council request for discussion paper (for 2025 specifications cycle)
- Stock status and catch of BSRE
- Revised list of potential AMs for BSRE rockfish for consideration moving forward



Council discussion paper request for 2025 specifications cycle

1. A review of the current AMs, including the reasons the AMs have not prevented catch from exceeding the ACL for the BSAI blackspotted and rougheye rockfish complex in recent years.
2. Spatial information on blackspotted and rougheye rockfish catch in the BS, AI, and AI subareas.
3. Information on which fisheries caught blackspotted and rougheye rockfish and in what amounts over the time period from 2015-2024.
4. Current stock status information and an evaluation of the biological consequences, if any, from the recent ACL overages.
5. Discussion of limitations in assessment information available for evaluating stock status.
6. Evaluation of potential AMs that may be effective for this stock complex including:
 - a. Spatial closures;
 - b. Seasonal closures;
 - c. Modified inseason management authority;
 - d. Reducing Total Allowable Catch in fisheries catching blackspotted and rougheye rockfish; and 
 - e. Any other AMs that may be relevant and useful

June review by Council to focus development of appropriate AMs for Fall 2025 specifications cycle:

1. A review of the current AMs, including the reasons the AMs have not prevented catch from exceeding the ACL for the BSAI blackspotted and rougheye rockfish complex in recent years.
2. Spatial information on blackspotted and rougheye rockfish catch in the BS, AI, and AI subareas.
3. Information on which fisheries caught blackspotted and rougheye rockfish and in what amounts over the time period from 2015-2024.
4. Current stock status information and an evaluation of the biological consequences, if any, from the recent ACL overages.
5. Discussion of limitations in assessment information available for evaluating stock status.
6. **Evaluation of potential AMs that may be effective for this stock complex including:**
 - a. **Spatial closures;**
 - b. **Seasonal closures;**
 - c. **Modified inseason management authority;**
 - d. **Reducing Total Allowable Catch in fisheries catching blackspotted and rougheye rockfish; and**
 - e. **Any other AMs that may be relevant and useful**



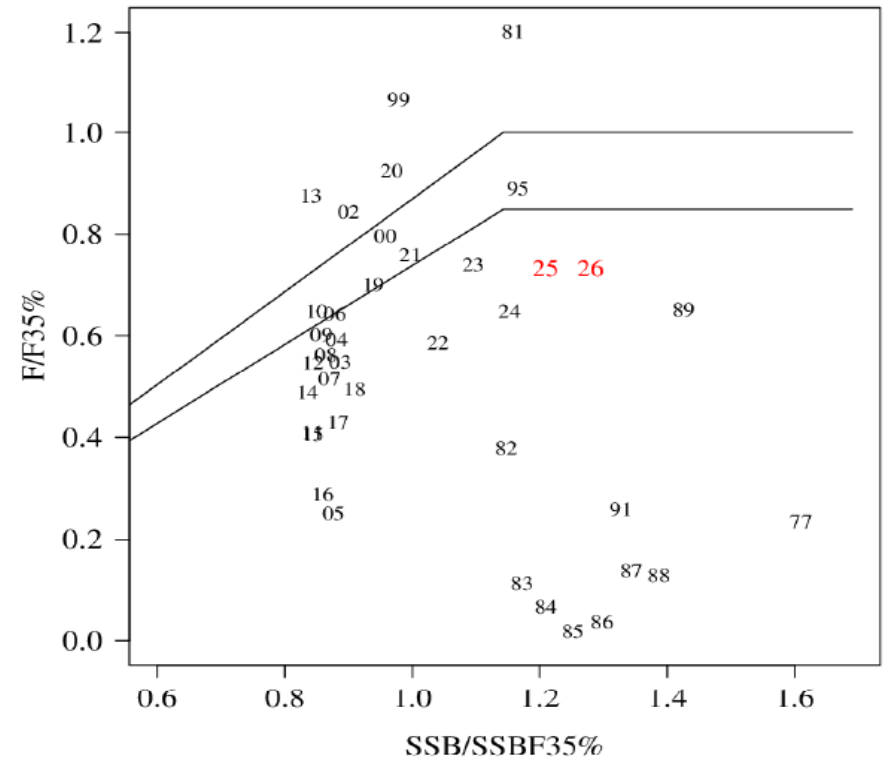
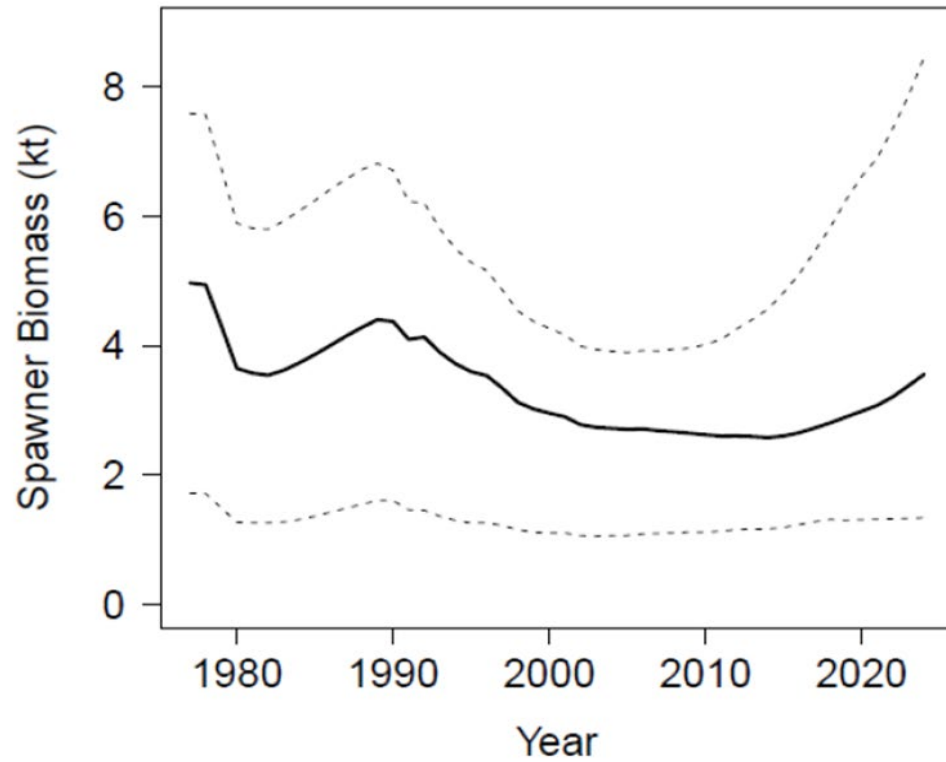
BSAI Groundfish FMP Accountability Measures

- FMP Section 3.2.4 references measures that are used to enumerate and manage catch:
 - Observer Program
 - Catch Accounting System
 - In-season management to the TAC level
 - Harvest specifications process that can account for a TAC overage

NS1 Guidelines require reevaluation of AMs (and potential modification) if an ACL is exceeding > 1 in 4 years

BSAI BSRE ACL exceeded 3 of last 4 years

Stock Status BSRE complex: next assessment 2026



Assessed as a single BSAI stock. Localized depletion concerns are noted for WAI

Catch of BSRE complex (Tables 2, 3 , 4)

Catch over BSRE complex ABC

Year	Catch	ABC	%
2008	193	202	95%
2009	197	539	37%
2010	228	547	42%
2011	170	454	37%
2012	201	475	42%
2013	337	378	89%
2014	208	416	50%
2015	196	453	43%
2016	164	561	29%
2017	234	501	47%
2018	250	613	41%
2019	405	555	73%
2020	531	708	75%
2021	515	482	107%
2022	455	503	90%
2023	607	525	116%
2024	639	569	112%

WAI MSSC and catch

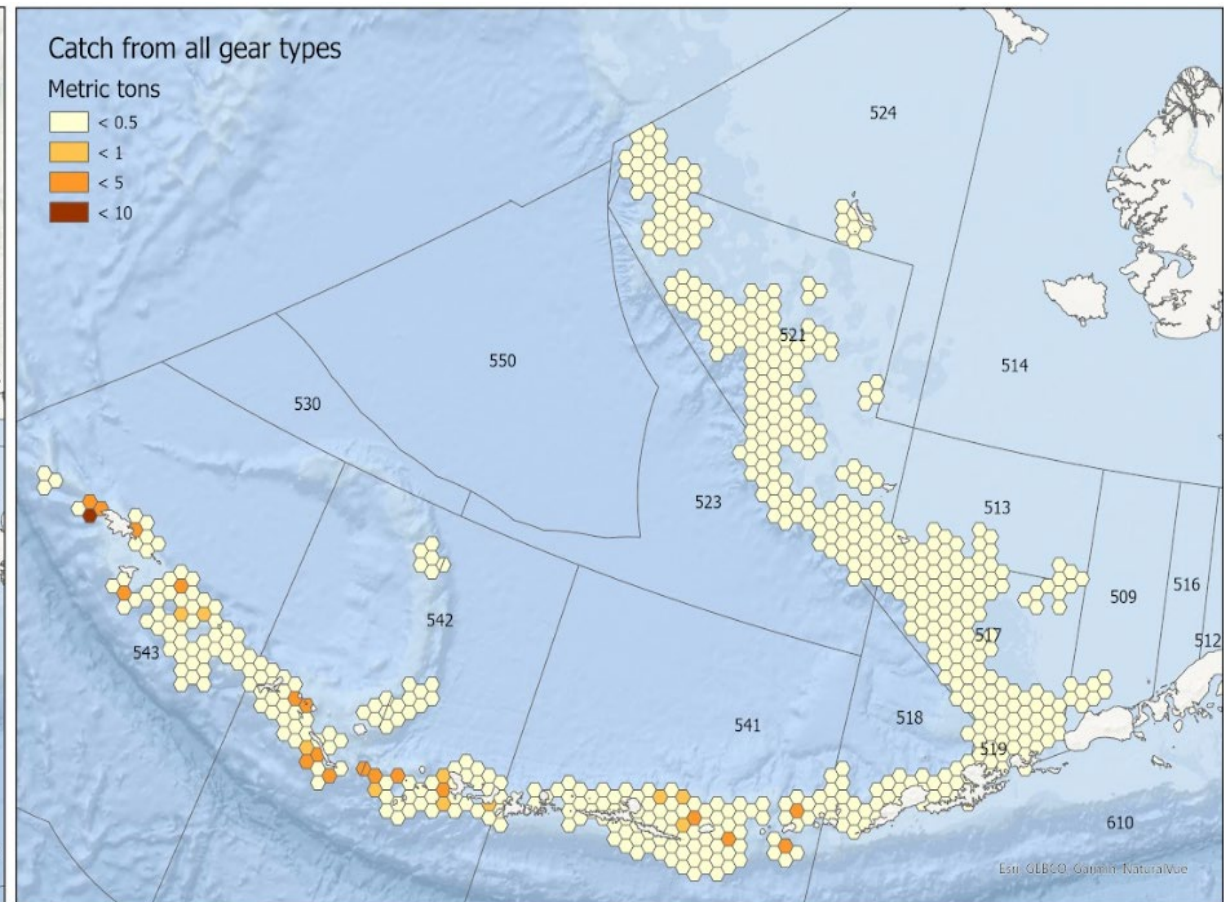
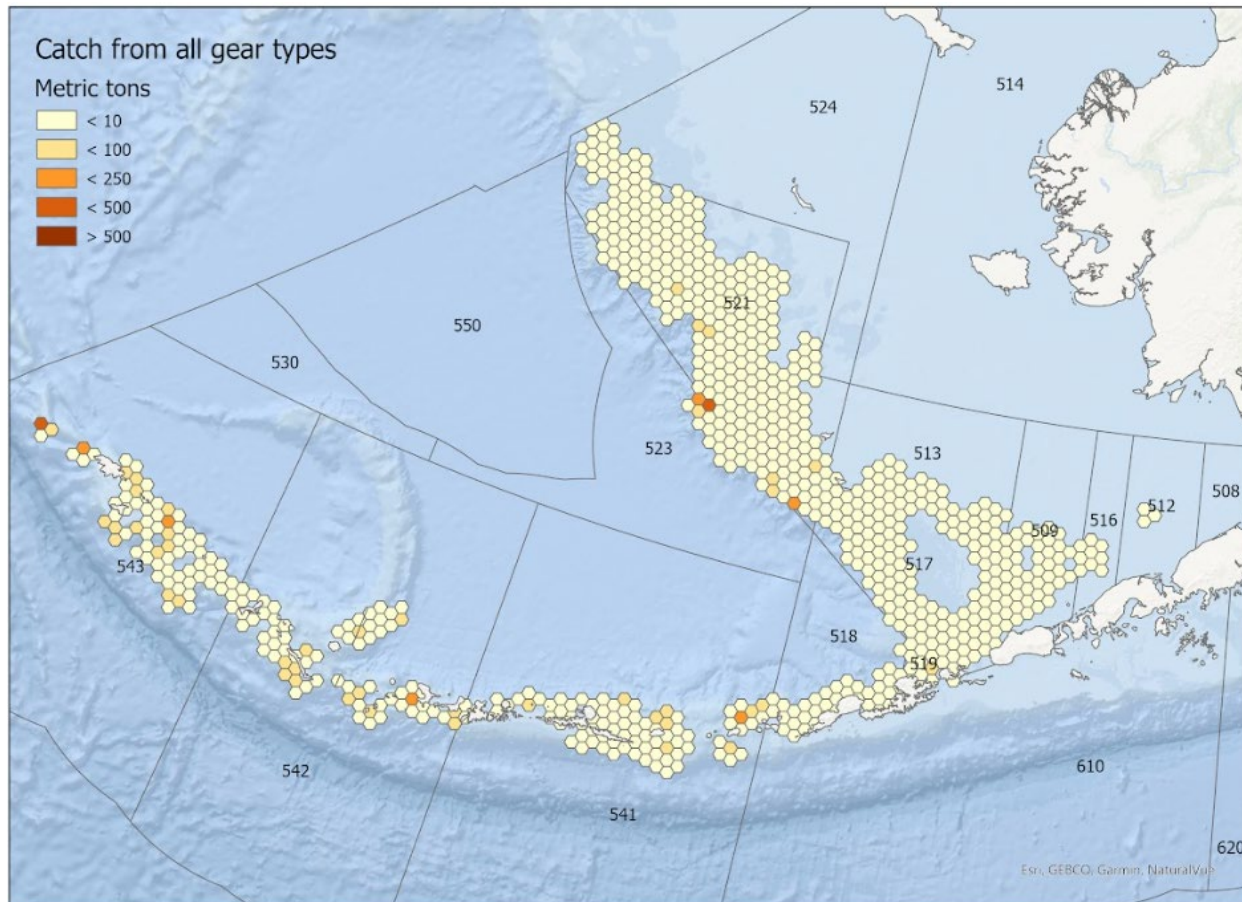
Year	MSSC	Catch	Catch/MSSC
2015	46	70	1.51
2016	58	40	0.69
2017	29	35	1.21
2018	35	67	1.91
2019	37	104	2.81
2020	48	168	3.50
2021	31	120	3.89
2022	32	104	3.25
2023	61	181	2.97
2024	67	252	3.76

PSC status and dates


Year	Subarea	Date put on PSC Status
2013	BSEAI	15-Jul
2019	WAI, CAI	6-Aug
2020	WAI, CAI	20-Aug
2021	WAI, CAI	2-Aug
2022	WAI, CAI	6-Aug
2023	WAI, CAI	10-Jul
2024	WAI, CAI	26-Aug



Catch of POP (left) and BSRE(right) Figures 3, 4



Catch of BSRE by target

	2008	2009	2010	2011	2012	2013	2014	2015	2016	2017	2018	2019	2020	2021	2022	2023	2024
Rockfish 	75%	66%	51%	63%	59%	60%	66%	59%	57%	45%	71%	73%	69%	72%	68%	67%	76%
Pacific Cod	15%	13%	14%	7%	19%	7%	5%	18%	7%	37%	14%	7%	13%	8%	9%	1%	3%
Atka Mackerel	3%	10%	6%	2%	3%	4%	1%	4%	8%	5%	10%	11%	7%	10%	11%	15%	11%
Arrowtooth/Kamchatka Flounder	6%	9%	26%	26%	15%	27%	23%	13%	21%	5%	4%	1%	8%	7%	8%	12%	6%
Other	2%	3%	3%	2%	3%	1%	4%	5%	7%	8%	2%	7%	3%	3%	4%	6%	4%



June review by Council to focus development of appropriate AMs for Fall 2025 specifications cycle:

1. A review of the current AMs, including the reasons the AMs have not prevented catch from exceeding the ACL for the BSAI blackspotted and rougheye rockfish complex in recent years.
2. Spatial information on blackspotted and rougheye rockfish catch in the BS, AI, and AI subareas.
3. Information on which fisheries caught blackspotted and rougheye rockfish and in what amounts over the time period from 2015-2024.
4. Current stock status information and an evaluation of the biological consequences, if any, from the recent ACL overages.
5. Discussion of limitations in assessment information available for evaluating stock status.
6. **Evaluation of potential AMs that may be effective for this stock complex including:**
 - a. **Spatial closures;**
 - b. **Seasonal closures;**
 - c. **Modified inseason management authority;**
 - d. **Reducing Total Allowable Catch in fisheries catching blackspotted and rougheye rockfish; and**
 - e. **Any other AMs that may be relevant and useful**



June motion by Council to focus development of appropriate AMs for Fall 2025 specifications cycle:

1. A review of the current AMs, including the reasons the AMs have not prevented catch from exceeding the ACL for the BSAI blackspotted and rougheye rockfish complex in recent years.
2. Spatial information on blackspotted and rougheye rockfish catch in the BS, AI, and AI subareas.
3. Information on which fisheries caught blackspotted and rougheye rockfish and in what amounts over the time period from 2015-2024.
4. Current stock status information and an evaluation of the biological consequences, if any, from the recent ACL overages.
5. Discussion of limitations in assessment information available for evaluating stock status.
6. **Evaluation of potential AMs that may be effective for this stock complex including:**
 - ~~a. Spatial closures;~~
 - ~~b. Seasonal closures;~~
 - c. Modified inseason management authority;**
 - d. Reducing Total Allowable Catch in fisheries catching blackspotted and rougheye rockfish;
and**
 - ~~e. Any other AMs that may be relevant and useful~~



Accountability Measures under consideration:

- Modified in-season management authority
 - Consider expanded in-season management authority→ allow NMFS to close a fishery or an area as an ACL is approached (currently only OFL)
 - Analysis: FMP amendment and Rulemaking (EA/RIR)
 - Considerations:
 - Council would need to articulate the specific situations in which this authority could be invoked (e.g. not supplanting OFL authority)
 - Examples could be defining only for specific fisheries, articulating how many years an ACL would have been exceeded to invoke this authority etc.
- Reduced TAC in fisheries that catch BSRE incidentally
 - POP fishery
 - Analysis: none required but staff could provide a table of potential TAC reductions and resulting bycatch reduction



Council decision on timing/intent for modified in-season management authority (pg 14)

For example, the Council may consider articulating one of the following options as their intent:

- 1) If a stock's ACL is exceeded more than once in a four-year rolling time frame, then NMFS may use their inseason authority to close fisheries that are catching that stock as the ACL is approached *for the following year*.
- 2) If a stock's ACL is exceeded more than once in a four-year rolling time frame, then NMFS may use their inseason authority to close fisheries that are catching that stock as the ACL is approached *for the next three years*.
- 3) If a stock's ACL is exceeded more than twice in a four-year rolling time frame, then NMFS may use their inseason authority to close fisheries that are catching that stock as the ACL is approached *for the following year*.
- 4) If a stock's ACL is exceeded more than twice in a four-year rolling time frame, then NMFS may use their inseason authority to close fisheries that are catching that stock as the ACL is approached *for the next three years*.

Draft reductions in POP TAC to reduce non-target catch of BSRE for Council consideration (pg 15)

Table 7 Reductions in POP catch required to Reduce BSRE by 85 tons Based Upon 2024 and 2021-2024 Average Incidental Catch Rates in the POP Fisheries

Rate Years	BS	541	542	543	BS/EAI	CAI/WAI	BSAI
2024	22,406	6,339	2,655	4,546	14,067	3,816	5,952
2021-2024 Average	10,214	9,303	3,503	7,604	10,244	5,558	7,200



Actions for the AP at this meeting

- Short-term: Consider whether to revise AMs for the 2026-2027 fishery: Reduced TAC for POP (either indicate in proposed specifications or finals specs in December)
- Long term: Consider initiating an action to evaluate expanded in-season management authority

